

new Work.



Create sophisticated expressiveness with outstanding performance. Complex combinations of pattern, color and texture translate to a collection with rich design aesthetics and optimum performance characteristics.

MANNINGTON  
COMMERCIAL

## COSTILLA / KAMI

### PERFORMANCE ATTRIBUTES

- Featuring INVISTA™ Antron® Legacy Type 6,6 nylon with DuraTech®
- Limited 15-Year ColorSafe® Stain Resistance Warranty
- Limited 15-Year XGUARD® Stain Resistance Warranty
- Limited 15-Year UltraBac® RE Wear and Backing Warranty
- Limited Lifetime Integra HP™ RE Wear and Backing Warranty
- Limited Lifetime Infinity® Modular Wear and Backing Warranty

### ENVIRONMENTAL ATTRIBUTES

- UltraBac® RE is certified to NSF-140-2007e Platinum Level
- UltraBac® RE and Integra HP™ RE contain a minimum of 10% post-consumer recycled content by total product weight
- Infinity® Modular contains pre-consumer recycled content
- CRI Green Label Plus
- Adhesive meets VOC content limit of SCAQMD Rule 1168
- ISO 14001 registered manufacturing facility
- Contributes to LEED credits

### ULTRABAC® RE

- Minimum of 10% post-consumer recycled content by total product weight
- Certified as environmentally preferable to NSF-140-2007e Platinum Level
- High tuft bind
- Resists edge ravel and delamination
- 12' broadloom
- Limited 15-Year Wear and Backing Warranty

### INTEGRA HP™ RE

- Contains a minimum of 10% post-consumer recycled content by total product weight
- Impermeable moisture barrier
- Eliminates wick-back staining
- Superior tuftbind wet/dry
- Superior dimensional stability
- Passes British Spill Test
- Flexible in cold/hot environments
- 9' and 12' broadloom
- Limited Lifetime Wear and Backing Warranty

### INFINITY® MODULAR

- Contains pre-consumer recycled content
- Eliminates wick-back staining
- Superior tuftbind wet and dry
- Superior dimensional stability
- Passes British Spill Test
- 24" x 24" carpet tile
- Limited Lifetime Wear and Backing Warranty

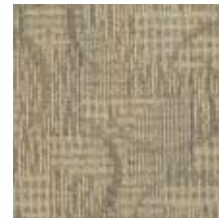
### FEATURED KAMI all colors available in both patterns



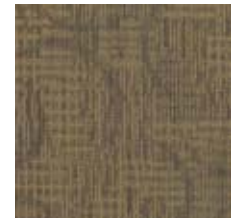
8503 odyssey



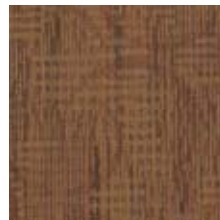
8308 sojourn



8206 expedition



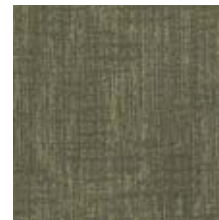
8204 travel



6401 safari



5309 tour



4412 trek



4311 outing



4210 adventure



3113 voyage



1516 migration



1507 course



1314 wend



3302 pilgrimage



3405 hike

Mannington Works.

800 241 2262 [manningtoncommercial.com](http://manningtoncommercial.com)

Printed on recycled paper. Please help us close the loop by recycling this brochure or by sharing it with another individual.

MCMII

MANNINGTON  
COMMERCIAL