

*new* Work.



*Rich texture and refined patterns.*

From a classic geometric design to a textured weave pattern, these styles are infused with saturated colors creating striking visuals with depth and dimension.

**MANNINGTON**  
COMMERCIAL

## TAILOR MADE II / CLASSIC FIT II

### PERFORMANCE ATTRIBUTES

UltraBac® RE

- Certified to NSF/ANSI-140-2007e Platinum Level
- Contains 10% post-consumer recycled content by total product weight
- High tuftbind
- Resists edge ravel and delamination
- Limited 15-Year Wear and Backing Warranty

rEvolve™

- Contains 20% total recycled content by total product weight (10% post-consumer, 10% pre-consumer)
- Rapidly renewable resource
- Dematerialization
- Energy efficient manufacturing
- Vinyl alternative
- ISO 14001 registered facility
- Produced domestically
- Closed loop recyclable via LOOP

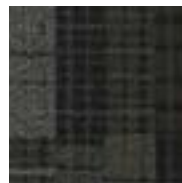
### ENVIRONMENTAL ATTRIBUTES

- UltraBac® RE is certified to NSF/ANSI-140-2007e Platinum Level
- UltraBac® RE and contains a minimum of 10% post-consumer recycled content by total product weight
- rEvolve™ contains 20% total recycled content by total product weight
- rEvolve™ uses a rapidly renewable resource
- Antron Lumena® fiber is EPP certified by SCS
- Adhesive meets VOC content limit of SCAQMD Rule 1168
- CRI Green Label Plus
- ISO 14001 registered manufacturing facility
- Contributes to LEED credits
- Carpet can be reclaimed through Mannington's LOOP™ Carpet Reclamation Program

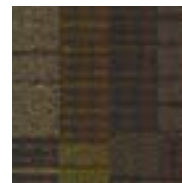
## TAILOR MADE II



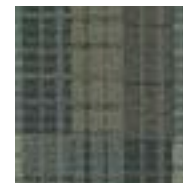
sharkskin



snakeskin



silk



cambridge



indigo



shantung



flannel



seersucker



tapa



canvas



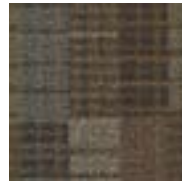
suede



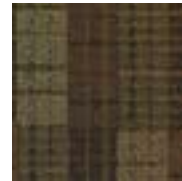
batik



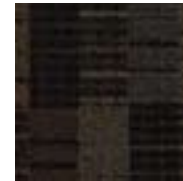
linen



velvet

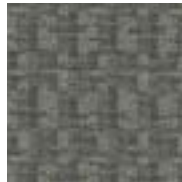


leather



raccoon

## CLASSIC FIT



sharkskin



snakeskin



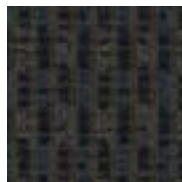
silk



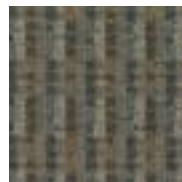
cambridge



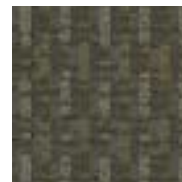
indigo



shantung



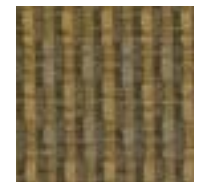
flannel



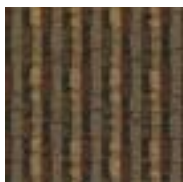
seersucker



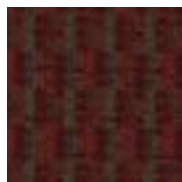
tapa



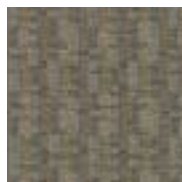
canvas



suede



batik



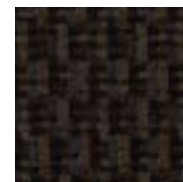
linen



velvet



leather



raccoon

Mannington Works.

800 241 2262 [manningtoncommercial.com](http://manningtoncommercial.com)

Printed on recycled paper. Please help us close the loop by recycling this brochure or by sharing it with another individual.

MCTM2

MANNINGTON  
COMMERCIAL