

WE THINK BUSINESS

ENVIRONMENTS SHOULD BE

STIMULATING, IMAGINATIVE

AND MOST OF ALL, INVITING.

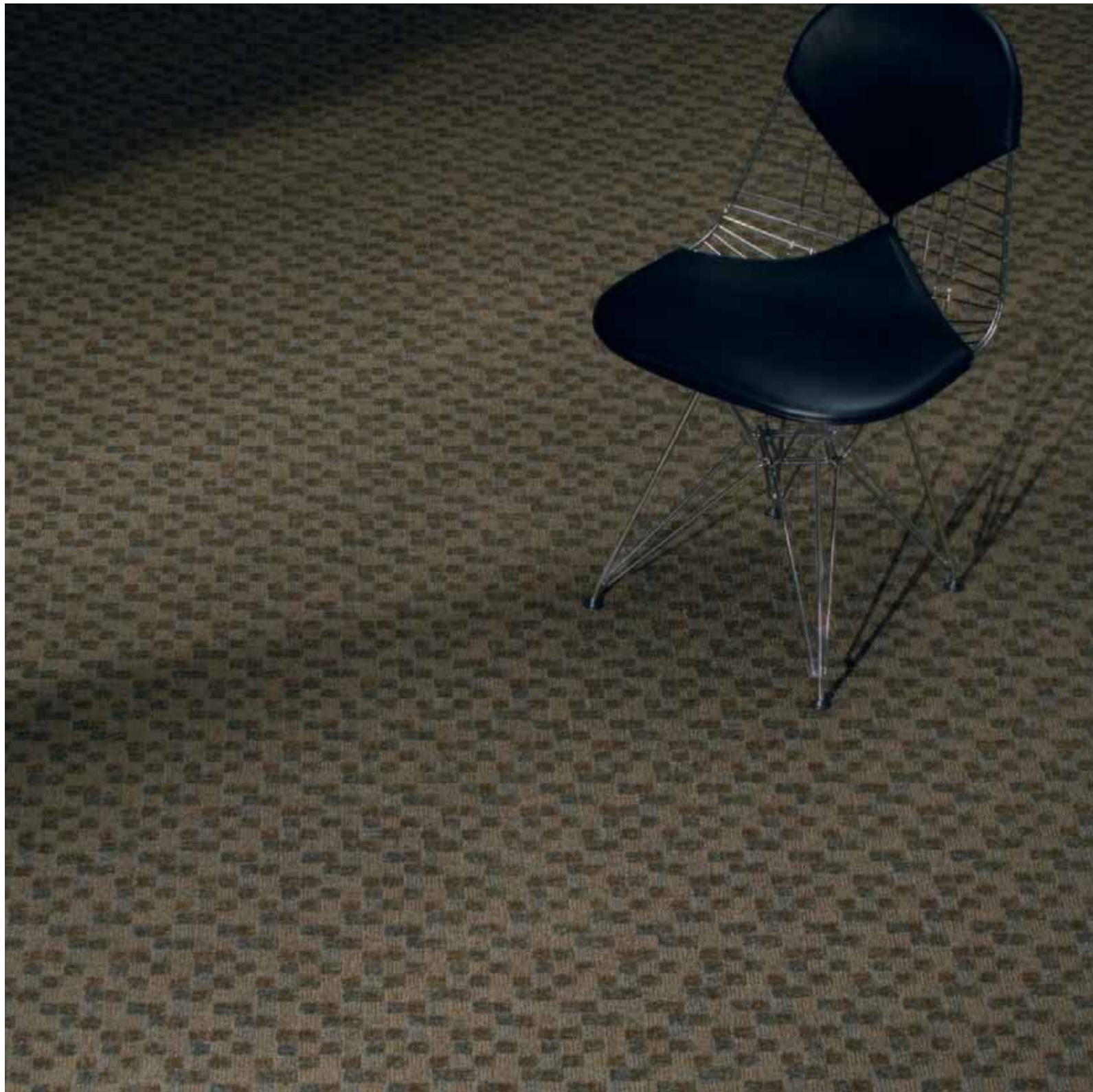
BECAUSE IT'S WHERE YOU

SPEND MOST OF YOUR TIME.



Exaggerated square styling, reminiscent of the ever-popular checkerboard, gives a modern take to a popular classic for executive suites of all kinds.

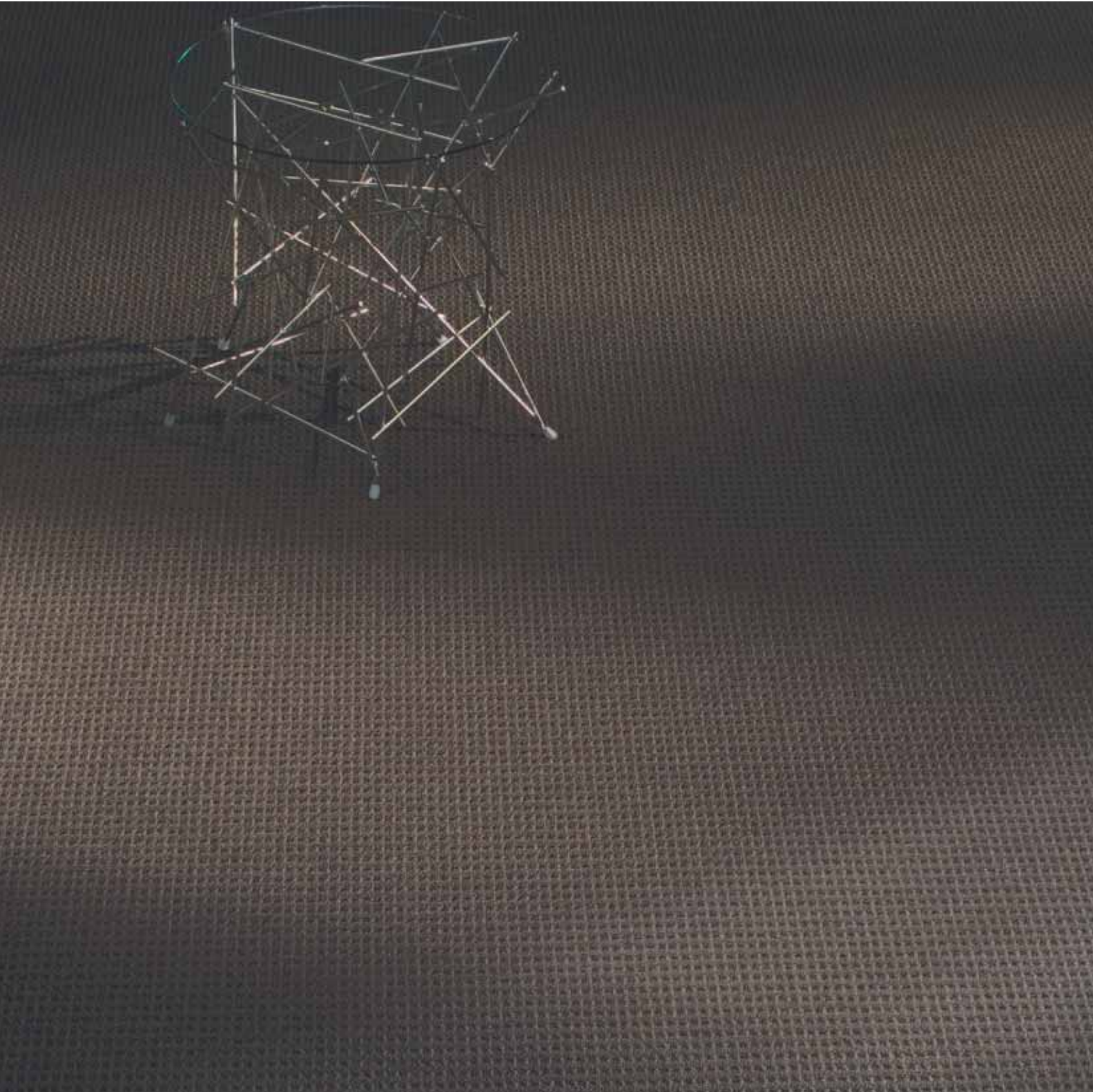




boardroom

Square-like geometrics overlaying a base of multi-dimensional textures creates a refined look with both cosmopolitan flair and color panache that's right for every room.

This is where it all comes together, inviting color variations with a tight grid like design that conveys versatility by itself or as a team in perfect coordination with virtually anything else you can imagine.



executive suite

boardroom

front office

FEATURES

Available in piece dyed broadloom.

Ultron® nylon 6,6 polymer features a tighter molecular structure with 20% higher resilience and 12% harder surface, resulting in better appearance retention, better resistance to crushing, matting & abrasive wear, and greater design flexibility.

UltraBac® Plus (broadloom)

- Excellent dimensional stability
- High tuft bind
- Resists edge ravel and delamination
- Limited 15-year Wear and Backing Warranty