

biospec<sup>®</sup> MD & fine fields<sup>®</sup>

featuring MCare<sup>®</sup> anti-microbial  
and Quantum Guard<sup>™</sup> HP wearlayer

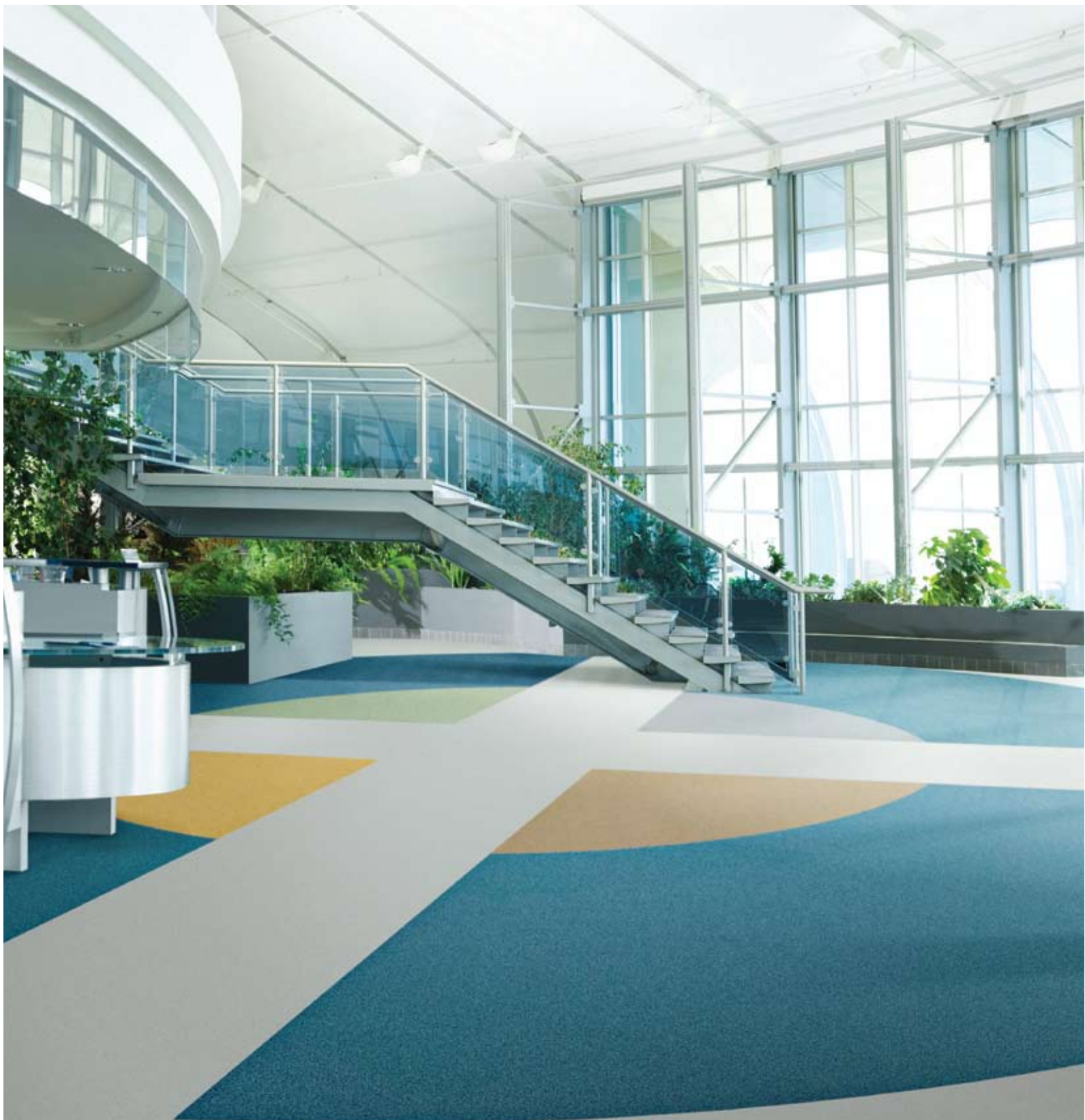
MANNINGTON  
COMMERCIAL.



# biospec<sup>®</sup> MD & fine fields<sup>®</sup>

Ideal solutions for healthcare applications offering exceptional performance advantages, including anti-microbial technology, wear and stain resistance, and lower maintenance costs through a no polish option.





main colors: niagara blue, ecru, bright white  
accent colors: gull gray, balsa, moss, jonquil



field colors: apricot haze, ecru  
accent colors: niagara blue, balsa  
mannington's edge collection wall base - 905 pewter



designed by stanley beaman sears  
photography by jim roof creative, inc.





designed by stanley beaman sears  
photography by jim roof creative, inc.

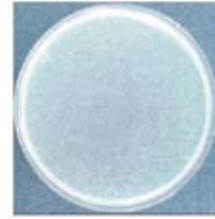
# biospec<sup>®</sup> MD & fine fields<sup>®</sup>

## MCare<sup>®</sup> anti-microbial

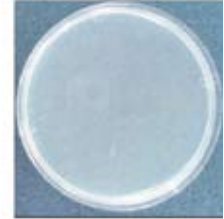
- Inhibits a wide range of bacteria and mold growth
- Reduces product deterioration due to premature degradation, odor & staining
- Testing results show efficacy against MRSA-Staph, C-Diff and E-Coli bacterium
- Lab results show a 99% reduction in microbial growth after 24 hours using MCare. Efficacy results are third-party certified

## cleaning and maintenance

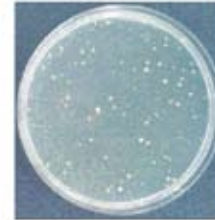
- Sweep regularly and damp mop as necessary to remove ground-in dirt and spills
- Use a diluted non-alkaline cleaner to maintain appearance, rinse and allow to dry
- For maximum efficacy in aseptic areas, no polish is necessary
- For non-aseptic areas, polish is recommended near exterior doors and high traffic areas



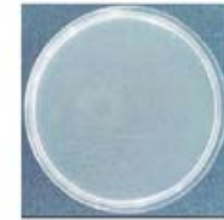
Escherichia coli bacteria growth



Escherichia coli MCare<sup>®</sup> anti-microbial inhibits growth



Staphylococcus aureus bacteria growth



Staphylococcus aureus MCare<sup>®</sup> anti-microbial inhibits growth

## Quantum Guard<sup>™</sup> HP

Quantum Guard<sup>™</sup> HP is a patented urethane wearlayer with aluminum oxide cured by ultra-violet (UV) process. It is the highest performance urethane finish in the industry which provides exceptional wear resistance, stain resistance, and lowers maintenance cost.

### aluminum oxide

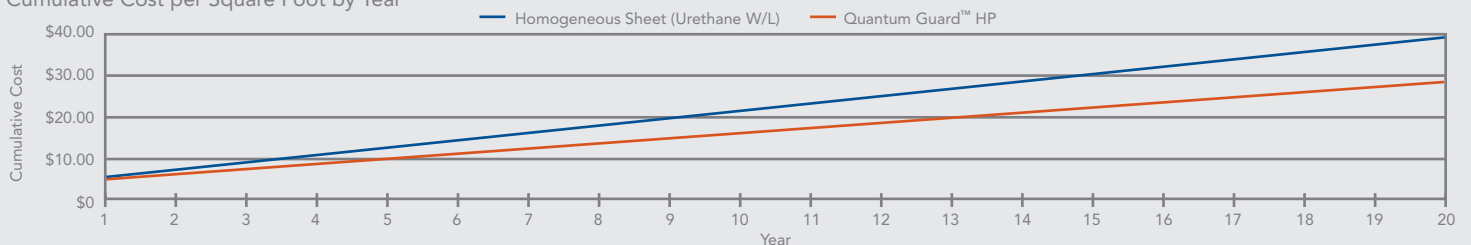
Aluminum oxide is a hard, tough natural-occurring mineral aggregate. On the MOH (measure of hardness) scale, diamond is a ten, aluminum oxide is a nine.

### low maintenance: no polish

- No polish, no buffing maintenance option
- Superior appearance retention
- Exceptional wear and stain resistance
- Unsurpassed cleanability and durability
- Provides enhanced slip retardance compared to standard resilient floors
- Limited 5 Year Wear Warranty

## cost of ownership

Cumulative Cost per Square Foot by Year



Note: Cleaning costs compiled using industry standards provided by professional maintenance organizations

## stain & wear performance

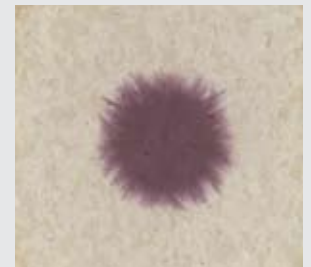
Developed to visually demonstrate stain performance and wear simulation.

Stain Performance – The stainant used was 2% Solvent Brown 22 in mineral spirits. This stainant is a strong indicator of general stain performance in vinyl flooring. Third Party Certified by S.G.S. US Testing.

Wear Performance – Each sample tested was exposed to elliptical cycles of 80 grit emery cloth.



mannington 1,000 Cycles



competitor 1,000 Cycles

## FEATURES

BioSpec MD and Fine Fields offer a complete range of sheet flooring designed to support a wide range of healthcare and other end-use applications.

Specify BioSpec MD in heavy load areas, taking advantage of its through-chip construction and proven performance. Coordinate with Fine Fields to reduce costs in less traffic critical sites. The net effect is a coordinated and cost-effective look throughout the facility.

MCare®, anti-microbial technology, inhibits a wide range of bacteria and mold growth while reducing product deterioration due to premature degradation, odor and staining.

Quantum Guard™ HP is a patented urethane wearlayer with aluminum oxide cured by ultra-violet (UV) process. It is the highest performance urethane finish in the industry which provides exceptional wear resistance, stain resistance, and lowers maintenance cost. No polish, no buffing option.

BioSpec MD contains 5% post-consumer recycled content by total product weight.

Solid or camouflage weld rods are color-integrated to blend or create a monolithic appearance. Solid weld rods can be used to accent seams, enhance a border, outline an inset or for wayfinding design.

Heat-welded seams provide an aseptic and integral surface that blocks the penetration of dirt and moisture. For optimal stain resistance performance, heat-welded seams should be sealed with a polish or sealer. Heat-weld is the preferred seaming method for healthcare and high traffic environments.

Includes low contrast visuals for operating rooms and other applications.

Limited 5 Year Commercial Warranty. Limited 5 Year Quantum Guard™ HP Wear Warranty.



- Certified NSF/ANSI 332 Gold
- BioSpec MD contains 5% post-consumer recycled content by total product weight and may contribute to LEED MR Credit 4
- Certified under FloorScore – an independent 3rd Party IAQ verification system for low emitting flooring. Approved as CHPS 01350 compliant and recognized in LEED IEQ Credit 4.3
- ISO 9001 and 14001 registered manufacturing facility
- Manufactured in Salem, NJ and may contribute to LEED MR Credit 5
- Adhesives meet VOC content limit of SCAQMD Rule #1168 and may contribute to LEED IEQ Credit 4.1
- Made in the USA

Mannington's Edge Collection Wall Base features Optimum Edge (Type TS), Premium Edge (Type TP) and Mannington Edge (Type TV) in 2 ½", 4" and 6" heights.